



Sapphire Origin Report

GIA Report 2235931724

April 28, 2026

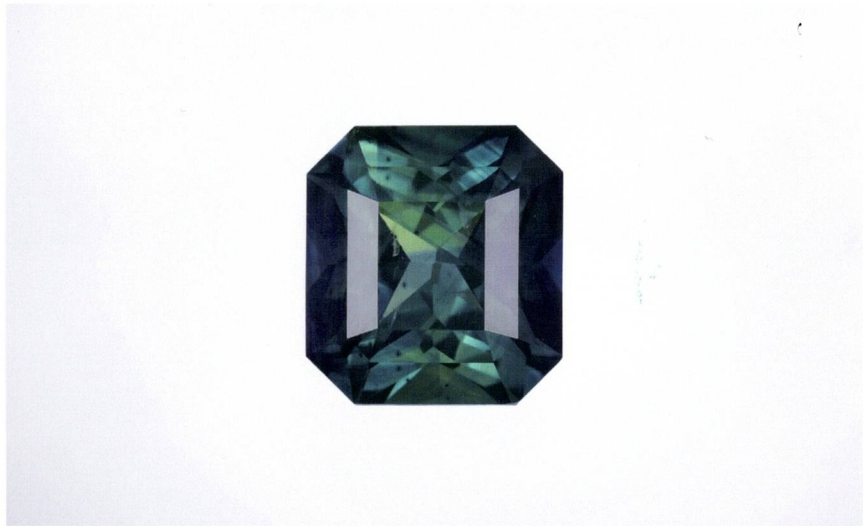


Image is not to scale. Color is approximate.

Sapphire

Sapphire is mostly thought of as blue in color, however the name refers to every color of the mineral corundum, except red (which is ruby). The name comes from the Greek sapheiros, which means "bright blue stone." Ancient Mediterranean cultures prized sapphire above all other gems. Today, the most highly prized blue sapphire is sourced from Kashmir, India. Other significant sources include Myanmar, Thailand, Sri Lanka, and Madagascar.

Characteristics

Mineral	Mohs Hardness	Toughness	Birthstone
Corundum	9	Excellent	September

To learn more about how GIA determines and classifies gemstone origin, go to reportcheck.gia.edu to view this report.



The results documented in this report refer only to the article described, and were obtained using the techniques and equipment used by GIA at the time of examination. This report is not a guarantee or valuation. For additional information and important limitations and disclaimers, please see gia.edu/terms or call +1 800 421 7250 or +1 760 603 4500.

©2025 Gemological Institute of America, Inc.

Details

Item Description

One loose stone

Weight

3.40 carats

Measurements

8.56 x 7.89 x 5.77 mm

Shape

Octagonal

Color

Green-Blue

Transparency

Transparent

Cutting Style: Crown

Step Cut

Cutting Style: Pavilion

Modified Brilliant Cut

Results

Species

Natural Corundum

Variety

Sapphire

Geographic Origin

USA (Montana)

Additional Results

Heated

Comments

Any statement on geographic origin is an expert opinion based on a collection of observations and analytical data.

7000036243



THE SECURITY FEATURES IN THIS DOCUMENT, INCLUDING THE HOLOGRAM, QR CODE AND MICROPRINT LINES, IN ADDITION TO THOSE NOT LISTED, EXCEED DOCUMENT SECURITY INDUSTRY GUIDELINES.